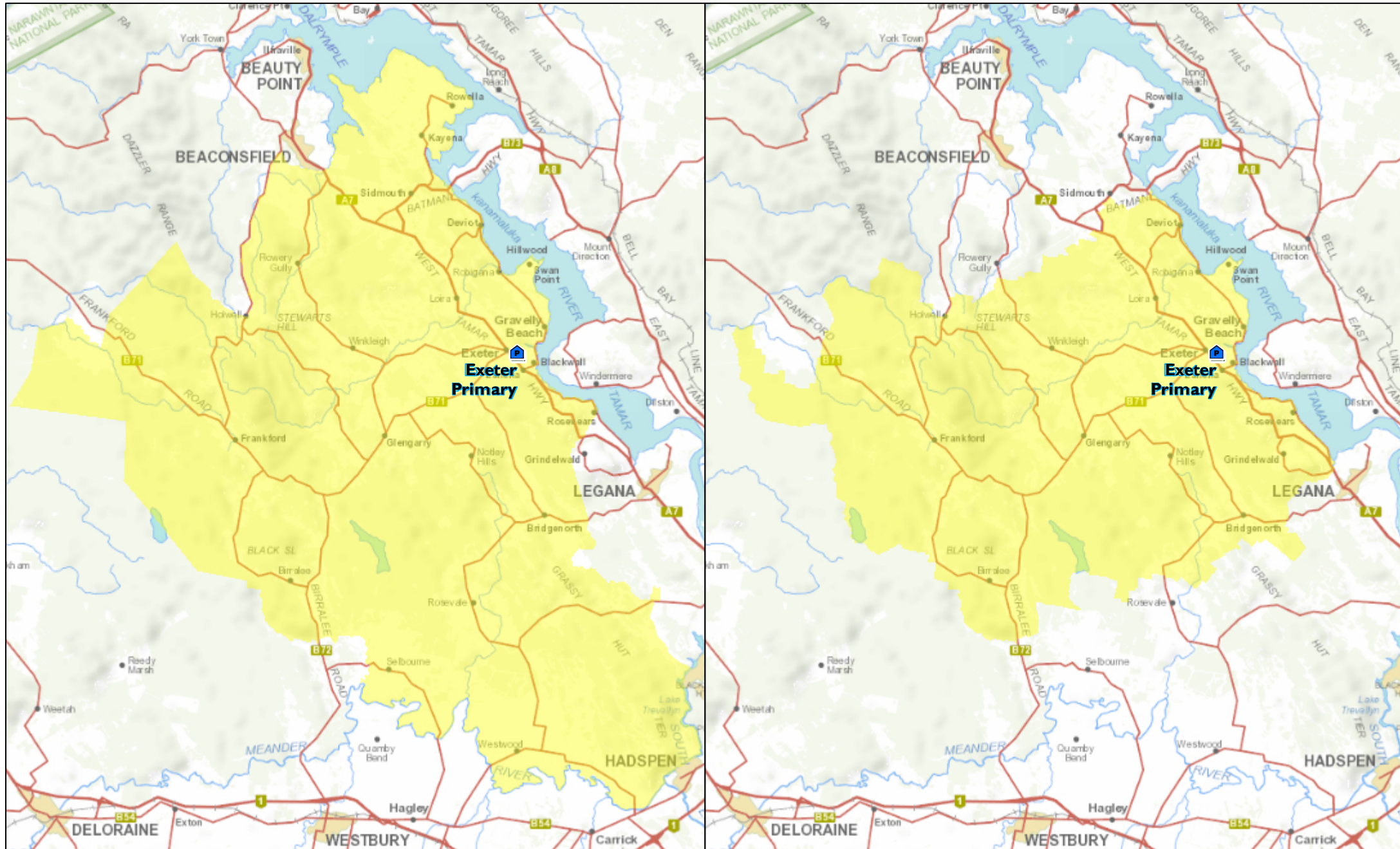


Exeter Primary School Intake Area for Consultation

CURRENT

FOR CONSULTATION



To access interactive maps, please go to:

<https://dpi-pwe-au.maps.arcgis.com/apps/webappviewer/index.html?id=d6cf08dbd79e472fba48505abf0373eb>

or <https://maps.thelist.tas.gov.au/listmap/app/list/map?bookmarkId=274130>